

Results and Impact



SSE
*Sustainable
Stock Exchanges*

The SSE is a UN Partnership Programme of



2024

Annual Report

Table of Contents

1. Executive Summary	3-4
2. Presentation of 2024 in Results and Impact Report:	
2.1 Consensus Building:	5 - 9
▪ Events and Media	
▪ New SSE Members & Membership Criteria	
▪ Exchange Progress	
▪ Net Zero Alliance	
2.2. Research and Data	10 - 14
▪ Market Monitors	
▪ Guidance	
▪ Database	
2.3. Capacity Building	15 - 16
▪ SSE Academy	
2.4 Partnerships and Funding	17 - 22
▪ Partnerships & Quartet Collaboration	
3. SSE 2025 Outlook	23- 24

Executive Summary: 2024 at a glance



Innovate new offerings:

SSE Academy prepares to expand its market education offering to 5 new programs.



Focus on demand driven global topics:

Gender equality, human rights, climate action, biodiversity



Mobilizing resources:

SSE continues to grow the Official Supporters program and adds more major project donors.



Collaboration with strong external partners:

IOSCO, IFRS-ISSB, UNFCCC, the World Bank (IFC) etc.



Supportive Quartet collaboration:

Increasing synergies between UNCTAD, UNGC, UNEP-FI and PRI on substantive and resourcing issues.

Executive Summary: 2024 at a glance



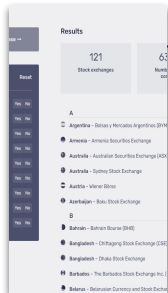
10 Events and Webinars

109 speakers (65% female) for SSE 2024 events



68 online SSE Academy workshops

Training over 14,800 participants (56% female) in 145 countries



5 Online Databases and 1 new Net Zero target tracking tool

Stock exchange, ESG guidance, derivative exchange, gender equality, TCFD activities and net zero reporting



4 new Market Monitors published

Three gender equality in corporate leadership benchmarks and one research tool on gender equality metrics



Consensus Building

- Events & Social Media
- New Members and Membership criteria
- Exchange Progress
- Net Zero Alliance
- External Partners & Quartet collaborations

Events & Social Media



200+ Events, Workshops & Webinars

- **109** speakers involved in SSE-organized events and webinars
- **3** in-person events organized (53% Female Speakers)
- **7** webinars organized (70% Female Participation)
- **9** panels/events organized by others featuring SSE as speaker
- **68** SSE training workshops (191 hours of training for 14,818 participants; 56% female)
- **111** Ring the Bell for Gender Equality events



100,000+ Communication engagement

Page visits:

- **446,000** web page views (+48%)
- **69,933** X visits (+69%)
- **7,365** LinkedIn visits (+9%)

Followers:

- **6,193** newsletter subscribers (+25%)
- **191,000** web users (+37%)
- **6,894** X followers
- **3,073** new LinkedIn followers (+87%)

New members

Four new SSE Partner Exchanges: CCX (Caspian Commodity Exchange), CSX (Cambodia Securities Exchange) PSX (Palestine Stock Exchange), MAE (Mercado Abierto Electrónico)



134 Members

New Accountability Measures

An “**active member**” is an exchange that:

1. Actively engages with the SSE secretariat on a regular basis; and
2. Shows commitment to develop sustainable financial markets through various sustainable actions as tracked by the SSE database



2 Actions

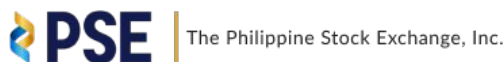
Good news!

More than half the SSE membership today are considered “active”

Stock Exchange Actions	Derivatives Exchange Actions
<ul style="list-style-type: none"> <input type="checkbox"/> Sustainability Report <input type="checkbox"/> ESG reporting required as a listing rule <input type="checkbox"/> ESG reporting guidance for market <input type="checkbox"/> ESG-related training <input type="checkbox"/> Sustainability-related index or bond listing segment <input type="checkbox"/> SME platform <input type="checkbox"/> Mandatory minimum for female board members <input type="checkbox"/> SSE Official Supporter 	<ul style="list-style-type: none"> <input type="checkbox"/> Sustainability Report <input type="checkbox"/> Sustainability reporting required for products <input type="checkbox"/> Written ESG reporting guidance <input type="checkbox"/> Offers sustainability-aligned products <input type="checkbox"/> ESG-related training <input type="checkbox"/> SSE Official Supporter

2024 Net zero exchange group members

In 2024 the UN SSE served as secretariat, together with PRI, for the Net Zero Financial Service Providers Alliance (NZFSPA), part of the broader Glasgow Financial Alliance for Net Zero (GFANZ). In particular, the SSE provides secretariat support for the Net Zero Exchange Group, which is part of the NZFSPA. In 2024, the SSE welcomed 9 new exchanges to the alliance's Net Zero Exchange Group (new 2023 members marked in **green**). This brings the group up to a total of 20 exchanges.





Research & Data

- Publications
- Databases and tracking of exchanges' actions
- Net zero tracking

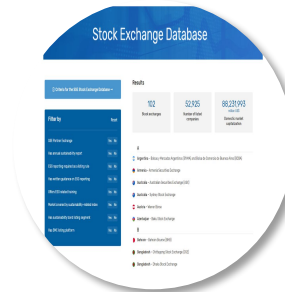
Research, guidance & benchmarking data



1 Net Zero target tracking tool

10 target reports submitted by exchanges

- Based on SSE guidance on Net Zero targets
- Ensures visibility of exchanges' action and transparency of their reporting

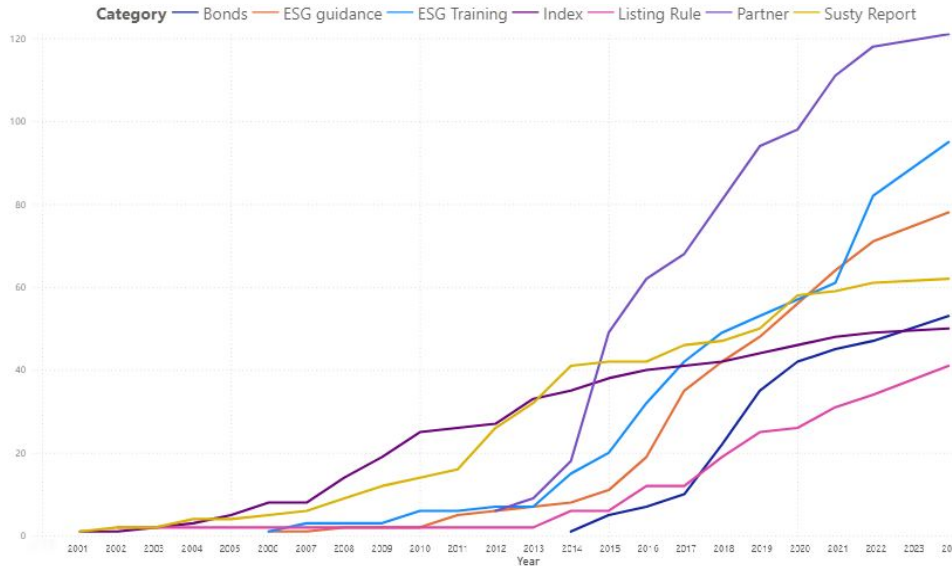


4 Databases

4 online databases

- Stock exchanges
- Derivatives exchanges
- Gender equality
- ESG guidance

Long term trends remain strong for sustainable finance



SSE partner exchanges

exchanges providing training on ESG topics

exchanges have written ESG reporting guidance

exchanges publish sustainability reports

exchanges have ESG bond segment

markets are covered by an ESG index

markets have mandatory ESG disclosures

Source: SSE database

Net Zero Exchange Group Members' Progress on Targets

MARKET	STOCK EXCHANGE	JOINED	REPORTING SOURCE	1.1.1	1.1.2	1.2.1	1.2.2	1.2.3	2.3.2	2.1.1	2.1.2	2.3.1	2.3.3	2.2.1	2.2.2
China	Hong Kong Exchanges and Clearing Limited	23Q2	<ul style="list-style-type: none"> 2023 CSR Report HKEX Net-zero Journey (website) 	●	●	●	●	●	●	●	●	●	●	●	●
Germany	Deutsche Boerse	23Q2	<ul style="list-style-type: none"> 2023 NZFSPA Report 2023 Annual Report (German) 	●	●		●	●	●			●		●	
Japan	Tokyo Stock Exchange	24Q1	<ul style="list-style-type: none"> Sustainability Report 2024 	●	●	●	●	●	●	●	●	●	●	●	●
Luxembourg	Bourse de Luxembourg	23Q2	<ul style="list-style-type: none"> Target Setting Progress Report 2023 	●	●	●	●	●	●	●	●	●	●	●	●
Mexico	Bolsa Mexicana de Valores	23Q2	<ul style="list-style-type: none"> 2023 Annual Report 2023 TCFD Report 2023 NZFSPA Report 	●			●	●		●			●	●	
Singapore	Singapore Exchange	23Q2	<ul style="list-style-type: none"> Sustainable Finance webpage Sustainability Report Sustainability Reporting Guide 	●	●	●	●	●	●	●	●	●	●	●	●
South Africa	Johannesburg Stock Exchange	23Q2	<ul style="list-style-type: none"> 2024 Net Zero Report 	●	●		●			●	●	●	●	●	●
United Kingdom	London Stock Exchange	23Q2	<ul style="list-style-type: none"> Climate Change Strategy 2021 Climate Transition Plan LSEG: London Climate Action Week 2023 Sustainability Report 2022 LSEG Policy Recommendations 	●	●	●	●	●	●	●	●	●	●	●	●



5 new SSE Publications

3 new market monitors on Gender Equality in corporate leadership

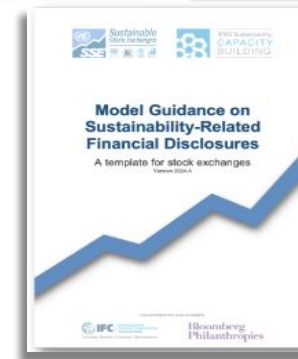
- Updated G20 and Regional analysis
- New deep dive analysis for LatAm and Eastern Europe and Central Asia
- 4,280 listed companies on 53 exchanges evaluated

1 new market monitor on gender equality metrics

- 74 stock exchange guidance documents evaluated

1 new Model Guidance on Sustainability-related Financial Disclosure

- ISSB S1 & S2 aligned: partnered with the IFRS Foundation





Capacity Building: SSE Academy

- ISSB S1 & S2
- Gender equality in capital markets

SSE Academy Programmes



Gender Equality:
2,403 Participants

Program includes two 2-hour modules

- Partnering with UN Women, IFC, Columbia University, Bloomberg, LuxSE, Brightmine
- 2,403 Participants over 15 sessions
 - 33% men
 - 57% managers or leaders
 - 85 countries
- 97% satisfied or very satisfied with training



Sustainability Disclosure:
12,415 Participants

International Sustainability Standards (ISSB) program
(3.5 hours + HW)

- Partnering with IFRS Foundation and IFC
- 12,415 participants over 38 sessions
 - 54% women
 - 130 countries
- Accounted for over 60% of IFRS Foundation total global capacity building in 2024.
- 94% satisfied or very satisfied with training



Partnerships & Resource Mobilisation

- Official supporters
- Strategic partners

Resource Mobilization

SSE Official Supporters: Mission Supporters

Resource Mobilization

SSE Official Supporters: Major Projects Supporters



**Bloomberg
Philanthropies**



IFC | International
Finance Corporation
WORLD BANK GROUP
Creating Markets, Creating Opportunities



NEW



climateworks
FOUNDATION

NEW



LSEG
FOUNDATION

NEW

Resource Mobilization

Human resources

- Added new team members in 2024
- Over 95% of budget used for human resources



**Anthony
Miller**

Chief Coordinator



**Tiffany
Grabski**

SSE Academy Head



**Lisa
Remke**

Deputy Coordinator



**Fiona
Quinlan-
Wells**

Training Officer,
SSE Academy



**Landon
Wilcock**

Project Officer



**Lois
Guthrie**

Senior Specialist



**Corli
Le Roux**

Senior Specialist

Executive Moves

NEW

Ms Nan Li Collins, UN SSE Board Chair



In 2024, Ms. Nan Li Collins joined as the new Chair of the UN SSE Governing Board. Nan brings to this position a wealth of professional experience spanning over two decades in various strategic, management, and programmatic roles both in regional offices and at headquarters with the United Nations, and in the private sector across Asia, Africa, North America, and Europe.

She has solid expertise in promoting sustainable investments in developing countries from both public and private sector perspectives.

Nan's extensive experience includes her recent role as the Global Director of Sustainable Investments and Innovation at UNOPS, based in Helsinki, Finland, a position she has held since November 2020.

She led a global team to promote infrastructure investments in many developing countries, including energy transition and co-investing with MDBs and DFIs. She served as UNOPS focal point in the UN Inter-agency Task Force on Financing for Development and worked closely with top leadership in crisis management.

Partnerships

External Partners



Partner	Consensus Building	Research	Capacity Building	Resourcing
IFC	✓	✓	✓	✓
Bloomberg		✓	✓	✓
IFRS Foundation	✓	✓	✓	
UN Women	✓	✓	✓	
Walk Free	✓		✓	✓
Syntao Green Finance	✓		✓	
Columbia University			✓	✓
UNFCCC	✓			
IOSCO	✓			
Gap Square			✓	
Climateworks Foundation				✓

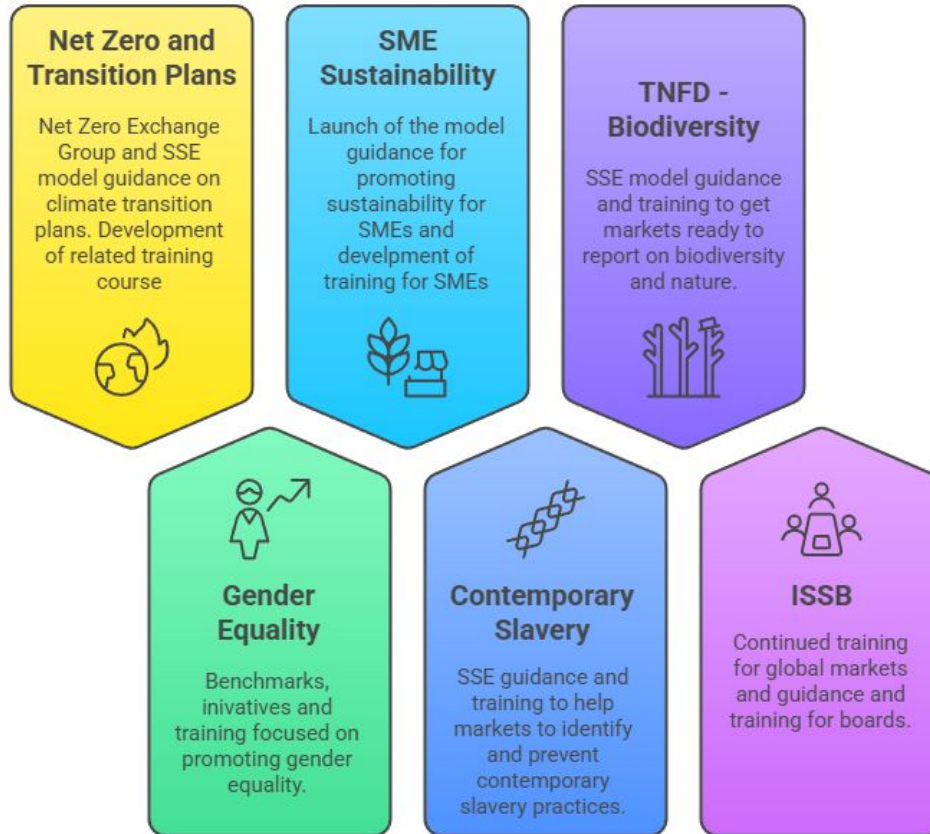
Partnerships

Quartet Collaborations

- **UNCTAD** collaborating on consensus building events (e.g. WIF), research, technical assistance and fundraising
- **UNGC** collaborating on fundraising and events (e.g. SDG summits, Ring the Bell) and market education
- **UNEP-FI** collaborating on climate disclosure training for banks and fundraising
- **PRI** collaborating on fundraising and Net Zero secretariat

Partner	Consensus building	Research	Capacity Building	Resourcing
UNCTAD	✓	✓	✓	✓
UNGC	✓		✓	✓
UNEP-FI			✓	✓
PRI	✓			✓

2025-2026 Strategic Outlook



2025 Outlook: Work Plan and Event Details

- Continue training and benchmarking research on gender equality
- Expanding **ISSB training and guidance**, including new bespoke training **for board members**;
- Adding **new** guidance and training on
 - **SME** sustainability,
 - **TNFD** disclosures,
 - **climate transition plans**, and
 - **modern slavery** avoidance, detection and remedy.
- **Expanding net zero alliance** membership





***Sustainable
Stock Exchanges***

The SSE is a UN Partnership Programme of



www.SSEinitiative.org

info@SSEinitiative.org